

New European Bauhaus, the University of Genoa and its host territory

Laura Gaggero
Vice Rector for Research alla ricerca UniGe

Liguria, a socio-economic precursor of national dynamics

Liguria: morphological, social, and economic characteristics always **anticipated** the dynamics that would later develop throughout Italy.

Strengths

- The presence of **three national seaports** makes the industries in the blue economy field significant in the regional economic structure.
- The industrial activity over time has contracted in size and specialized in **knowledge-intensive activities**, such as robotics, biomedical and ICT.
- High rate of **registered patents** and the share of **STEM researchers over the regional population**.

Weaknessess

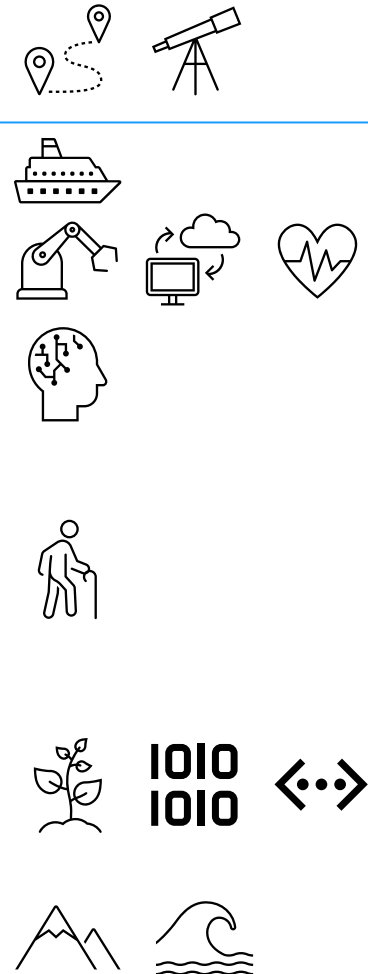
- Industry mainly consisting of **SMEs**,
- **Low birth rate and high average age** of the population make the region scarcely permeable to innovations,

Opportunities

- Therefore, it represents a sort of **laboratory** to test the validity of **new tools and policies** for a territorial development capable not only of making the **ecological and digital transition** effective, but at the same time increasing the resilience of the region itself.

Threaths

- Liguria is a **fragile territory**, with a **strong anthropic pressure** on a **narrow coast belt**, behind a **mountain range** affected by the **abandonment of production activities and depopulation**.



Unige, a polycentric University

The University of Genoa (UniGe) aims at being a driving force for territorial growth, a counterpart for local realities to promote synergistic, transversal and multidisciplinary actions, with a high socio-economic impact and enabling the creation of a regional space with a high university vocation.

The Mission

The University of Genoa contributes to the progress of knowledge, in the respect of scientific and teaching autonomy, and of the freedom and dignity of those who work within it.

The mission of the University is carried out in education, research and societal impact areas, with particular concern to the international dimension and to the quality of processes and activities.

Training

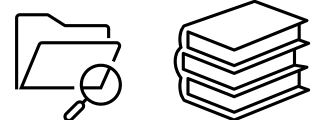
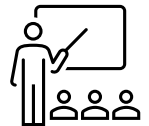
The University task is the transfer of knowledge by means of **qualified training** of students: to this aim the University carries out **multiple teaching and training activities with attention to innovative methodologies and appropriate infrastructures.**

Research

For UniGe, the **development of knowledge through basic and applied research** is central to the needs of progress and social well-being. **Fundamental research** is a major element of competitiveness for the country and constitutes a cornerstone of **applied research, whose results are transferred to the social and productive system.**

Societal impact

The University is an essential scientific and cultural **reference** between local realities and globalized society. Therefore, it **contributes to social, cultural and economic development** through the direct application, valorisation and use of knowledge, as well as lifelong learning and actions involving the population and all stakeholders in society.



UniGe and the NEB Challenge 2023

- **ARCHEO-blue&greenway**, headed by Imperia Province. UniGe is partner (prof Negrino , Dafist). Valorization of SPheritage (<https://lastatalenews.unimi.it/progetto-s-p-heritage-variazioni-livello-mare-passato-futuro>) in partnership w/ Pisa, Milano and Bologna Universities.
- **LIBERI TUTTI** outdoor mobility for disabled, Testico Municipality Unige is partner: DITEN (prof. Formentini), DAFIST (prof. Stagno) e DAD (prof. Casiddu);
- **NEB-BILC** - *Bauhaus Innovative Life for Communities*", Maritime Alps Park, UniGe is partner: DAD (prof. Casiddu) , DISTAV (prof. Mariotti) e DIEC.
- **Building Together** - *Fostering Cultural Engagement and Urban Regeneration through Open Innovation and the New European Bauhaus* Leader: Città metropolitana di Genova, partners: Genoa Municipality and Talent Garden Genova srl. UniGe is partner (Prof. Pirlone, Dicca).

UniGe and EU programmes

The challenge from the NEB is the integration of the 3 dimensions - inclusivity, sustainability, beauty.

Internal synergies + Region + Territory are crucial.



2014-20

A total of **94 projects**,

75 in themes related to **at least one** of the 3 NEB values (inclusivity, sustainability, beauty)

Other EU programmes: a total of **27 projects**, 18 of which in topics related to at least one of the 3 NEB values.

Creative Europe Programme:

"Creative Food Cycles" - Innovative and creative practices between food, architecture and conviviality in a transnational and European perspective, UniGe is **partner** Prof.S. Pericu at DAD (<https://iaac.net/project/creative-food-cycles/>)

Horizon Europe

THE NEXT EU RESEARCH & INNOVATION PROGRAMME (2021 – 2027)



2021-27

@2023 -> 54 projects

45 in themes related to **at least one** of the 3 NEB values (inclusivity, sustainability, beauty)

Other EU programmes: till today 16 projects, 7 of which 7 in topics related to at least one of the 3 NEB values.

Creative Europe Programme:

"ReCITYing. Reactivating unused urban spaces through architecture and arts», UniGe is **coordinator**, PI prof. M. Navarro Gausa at DAD.



**Università
di Genova**

UniGe and FESR-INTERREG

167 projects awarded since 2000 to nowadays through all Interreg Programmes (It-Fr Alcotra; It-Fr Marittimo; Alpine Space; Med; Central Europe; ENI; Urbact; Interreg Europe...)

- **26** through programmes 2000-2006
- **42** through programmes 2007-2013
- **83** through programmes 2014-2020
- **16** from first calls 2021-2027



UniGe and LIFE+

35 projects awarded since 2000

12 in program 2007-2013 (LIFE+)

9 in program 2014-2020

4 awarded in the program 2021-27, including "**LIFE BE-WoodEN** - Buildings and Education in Wood Ecosystem for the New European Bauhaus», Unige is Coordinator (prof. G. Franco, DAD)

Proposal ID **101148077**

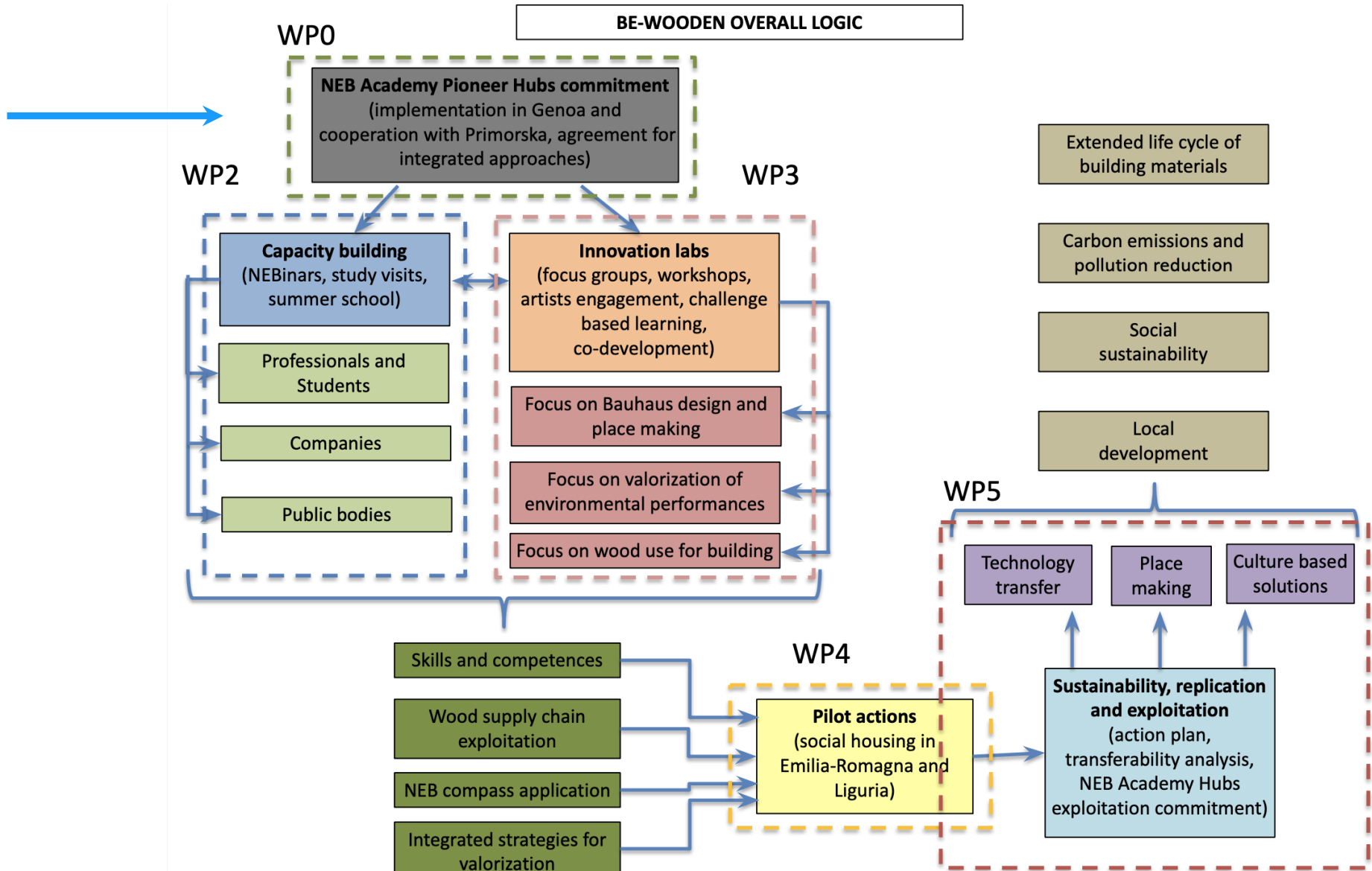
Acronym **LIFE BE-WoodEN**

2 - Participants

List of participating organisations

#	Participating Organisation Legal Name	Country	Role
1	UNIVERSITA DEGLI STUDI DI GENOVA	IT	Coordinator
2	REGIONE LIGURIA	IT	Partner
3	ART-ER-SOCIETA CONSORTILE PER AZIONI	IT	Partner
4	UNIVERSITA DEGLI STUDI DI FIRENZE	IT	Partner
5	FEDERAZIONE ITALIANA DELLE INDUSTRIE DEL LEGNO DE IT		Partner
6	COMITE EUROPEEN DE COORDINATION DE L'HABITAT SOC(BE		Partner
7	UNIVERZA NA PRIMORSKEM UNIVERSITA DEL LITORALE	SI	Partner
8	POLITECHNIKA WROCLAWSKA	Poland	Partner

Be WOODEN





**Università
di Genova**